



# TROMOX MINO

**MGB**

## ENGINE

Mid Drive 1200W Motor

## DISPLACEMENT

equivalent to 50cc moped

## RATED OUTPUT

60V31Ah/60V26Ah

## MAX. TORQUE

## COOLING SYSTEM

Air Cooled

## LENGTH / WIDTH / HEIGHT / WEIGHT

1500mm / 725mm / 925mm /

## SEAT HEIGHT

640mm

## GEARBOX

Automatic

## TANK CAPACITY

90Kms on a full charge in Eco Mode



More colours available

# £1,499

+ OTR

# TROMOX MINO FEATURES

## REVOLUTIONARY MOTOR

TROMOX empowered MINO with a new generation of urban vehicle power system which generates premium performance for the bike, in addition, brings the rider great fun during riding. It uses a rugged magnetic steel ring, both chain and belt final drive to achieve the maximum torque when the bike is at low speed. Not like the traditional hub motors, this new design brings more power to the bike and the riders are able to feel relax when they need to drive up the hill or slope. Rated at 1.2kW with a maximum output of 2500 rpm



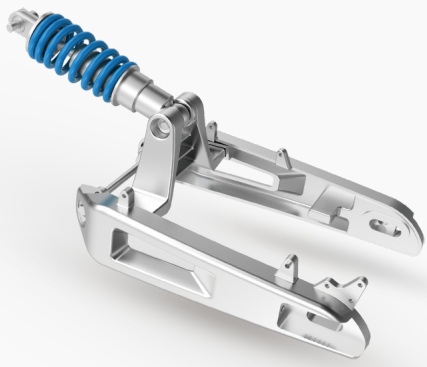
## LITHIUM-ION 18650 BATTERY

The high capacity Samsung battery not only provides great performance but also a great range too.

## SMART LCD DASHBOARD

Full colour LCD Cold Light display, housed in an IP65 waterproof and dust proof outer case is clear and easy to read and gives all the info you need.



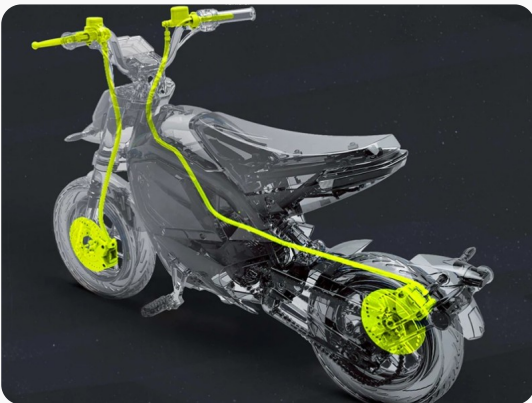


## ALLUMINIUM CYCLE PARTS

The application of aluminium parts on the vehicle makes MINO very light. The whole vehicle weighs only 68 kilos. It is very easy to carry or load in transportation. The Mino has an alloy swingarm, yokes, footrests and multi-spoke wheels.

## STEEL CRADLE FRAME

The lightweight, robust cradle frame is made of carbon steel tube giving great strength and great build quality.

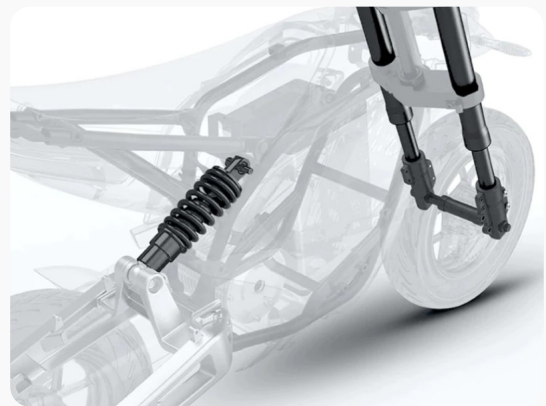


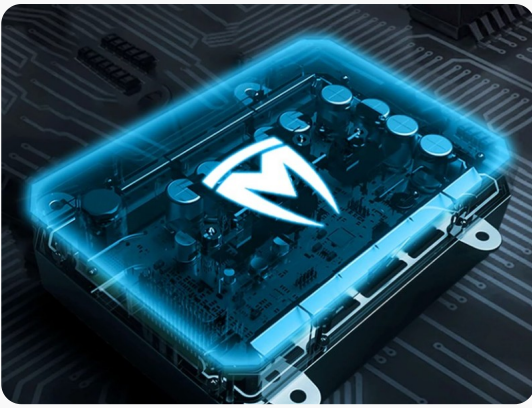
## FRONT + REAR DISC BRAKES

The Mino is fitted with 180mm hydraulic disc brakes on the front and rear wheels for powerful, progressive and safe braking.

## MOTORCYCLE SUSPENSION

The Mino has proper Motorcycle spec suspension for a comfortable and controlled ride on any surface. At the front are a pair of 30mm USD forks, gripped in chunky alloy yokes. The rear suspension is a mono-shock with adjustable pre-load.





## **I.C.C.S**

The Intelligent Central Control System Consists of TROMOX APP, VCU, and more than 20 diagnostic sensors over the entire vehicle, making the Mino a real intelligent and reliable vehicle.

# TROMOX MINO FINANCE

Flexible payment options to suit your budget

## HP Finance

Hire Purchase

**8.90% APR**

**£30.82**

Monthly Payment

**£299.00**

Customer Deposit

**60**

Months Term

Cash Price:	<b>£1599</b>
Total Amount of Credit:	<b>£1300</b>
Agreement Duration:	<b>60 months</b>
Interest Rate (Fixed):	<b>4.70%</b>
Monthly Payments:	<b>£30.82</b>
Total Amount Payable:	<b>£2,148.20</b>

Rates available from **8.90%** APR; **8.90%** APR Representative. Finance is provided by MotoNovo Finance Limited, company no. 11556144, registered in Wales at 2 Central Square, Cardiff, CF10 1FS. Authorised and regulated by the Financial Conduct Authority under FRN 827851. All applications for credit are subject to eligibility and affordability criteria. The rate shown may not be the rate you are offered. MotoNovo interest rates start from [INTEREST] Fixed / **8.90%** APR. MotoGB Ltd is authorised and regulated by the Financial Conduct Authority FCA 661247 and acts as a credit broker not a lender. MotoGB may receive a commission from the finance company for introducing the transaction. You can ask them to tell you the amount of that commission.